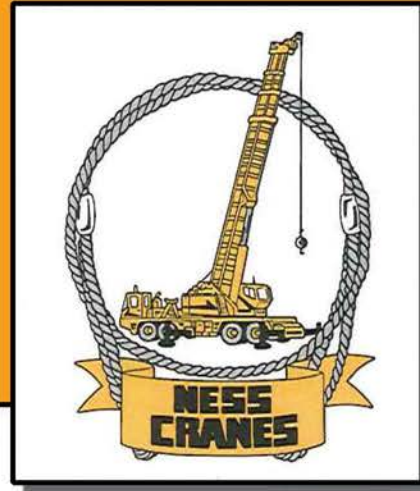
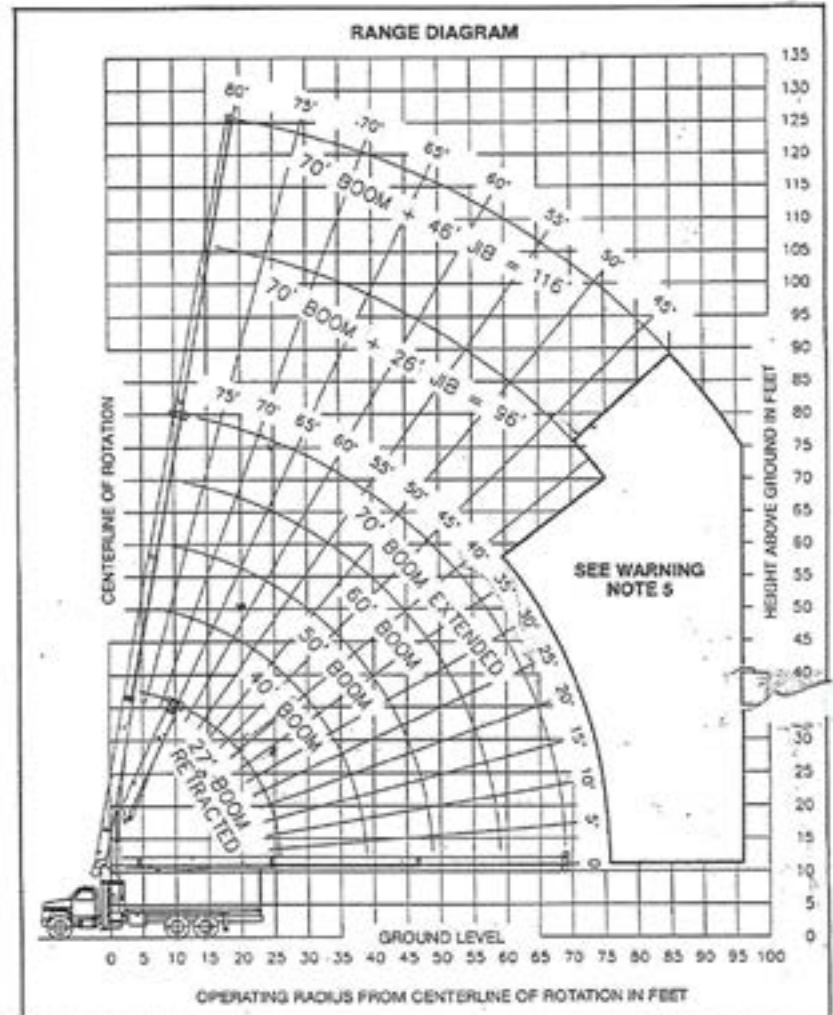
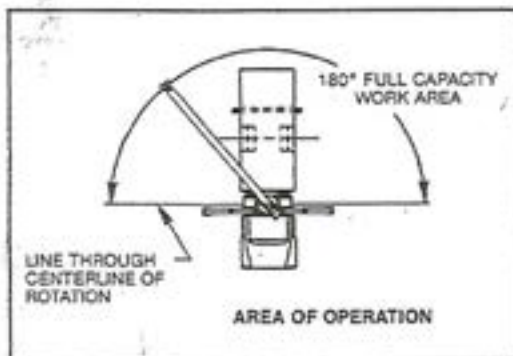


# 17 TON BOOM TRUCK



**Notes:**





HOIST REEVING DIAGRAM				
1-PART LINE	2-PART LINE	3-PART LINE	4-PART LINE	<b>WARNING</b> Anti-two-block system must be in good operating condition before operating crane. Refer to Owner's Manual.  Keep at least 3 wraps of load line on drum at all times.
<p>OVERHAUL BALL</p>	<p>SINGLE SHEAVE BLOCK</p>	<p>SINGLE SHEAVE BLOCK</p>	<p>AUXILIARY BLOCK DOUBLE SHEAVE BLOCK</p>	
7,600 LBS.	15,200 LBS.	22,800 LBS.	30,400 LBS.	<b>WIRE ROPE</b> 9/16" or 1" — 6 x 25 WRC (3.5:1 S.F.) 26,500 LBS. Breaking Strength
7,400 LBS.	14,800 LBS.	22,200 LBS.	29,600 LBS.	9/16" Rotation Resistant (3.0:1 S.F.) 37,000 LBS. Breaking Strength





**MANITEX INC.**  
A Subsidiary of The Manitowoc Company, Inc.  
McAllen, Texas 78503

MEETS  
ANSI B30.5  
REQUIREMENTS



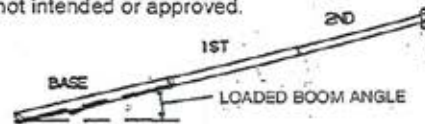
## MODEL 1570 LOAD RATING CHART — WITH CAPACITY ALERT SYSTEM

LOAD RATINGS IN LBS. WITH OUTRIGGERS AND STABILIZERS EXTENDED											JIB LOAD RATINGS IN LBS. WITH OUTRIGGERS AND STABILIZERS EXTENDED					
Operating Radius: Feet	Loaded Boom Angle: Degrees	Boom Length 27 Feet	Loaded Boom Angle: Degrees	Boom Length 40 Feet	Loaded Boom Angle: Degrees	Boom Length 50 Feet	Loaded Boom Angle: Degrees	Boom Length 60 Feet	Loaded Boom Angle: Degrees	Boom Length 70 Feet	Operating Radius: Feet	Loaded Boom Angle: Degrees	26' Jib For All Boom Lengths See Warning Note 4	Operating Radius: Feet	Loaded Boom Angle: Degrees	46' Jib For All Boom Lengths See Warning Note 4
5	79	30,400									20	80	4,350	20		
8	72	20,200	79	18,500							25	77	3,560	25	80	3,000
10	68	17,000	76	15,420	79	14,620					30	74	2,930	30	78	2,660
12	63	14,750	73	13,310	77	12,550	79	11,870			35	71	2,430	35	75	2,310
15	55	12,350	67	11,100	73	10,400	76	9,810	79	9,200	40	67	2,010	40	72	1,960
20	40	9,520	60	8,600	67	8,030	71	7,570	75	7,140	45	64	1,670	45	70	1,670
25	18	6,860	51	7,010	60	6,520	66	6,100	70	5,720	50	61	1,390	50	67	1,420
30			41	5,820	53	5,480	61	5,120	66	4,810	55	57	1,150	55	64	1,210
35			27	4,730	46	4,660	55	4,370	61	4,100	60	53	940	60	61	1,030
40					37	3,950	49	3,760	56	3,530	65	49	760	65	59	870
45					25	3,240	42	3,260	51	3,080	70	45	600	70	56	720
50							34	2,800	45	2,700	75	41	470	75	52	600
55							23	2,280	39	2,350	80			80	49	490
60									31	2,000	85			85	45	400
65										21	1,620					
		670 LBS.	450 LBS.		360 LBS.		300 LBS.		260 LBS.		DEDUCTIONS FOR STOWED JIB					

**DEDUCTIONS FROM RATED LOADS FOR MANITEX SUPPLIED LOAD HANDLING DEVICES**

Auxiliary block	50 Lbs.
Overhaul ball	120 Lbs.
Single sheave load block	260 Lbs.
Double sheave load block	350 Lbs.
Hose reel	140 Lbs.
Swing-around jib (stowed)	See load chart

**WARNING**  
Lifting off the main boom point while the swing around jib is erected is not intended or approved.



**WARNINGS**

- The operator must read and understand the Owner's Manual before operating this crane.
- Positioning or operation of crane beyond areas shown on this chart is not intended or approved except where specified in Owner's Manual.
- Loaded boom angles at specified boom lengths give only an approximation of the operating radius. The boom angle before loading should be greater to account for deflections. Do not exceed the operating radius for rated loads.
- The operating radius shown in the jib load rating chart is for fully extended boom only. When boom is not fully extended, use only loaded boom angle to determine load rating of jib. Do not rely on capacity alert system when lifting from jib.
- Boom must be fully retracted when jib is erected, before lowering boom through this area.
- For boom angles not shown on jib load rating chart, use rating of next lower boom angle.
- For boom lengths not shown, use rating of next longer boom. For load radii not shown, use rating of next longer radius.

Crane load ratings on outriggers are based on freely suspended loads with the machine leveled and standing on a firm uniform supporting surface. No attempt shall be made to move a load horizontally on the ground in any direction.

9. Practical working loads depend on supporting surface, wind and other factors affecting stability such as hazardous surroundings, experience of personnel and proper handling, all of which must be taken into account by the operator.

10. The maximum load which may be telescoped is limited by hydraulic pressure, boom angle and boom lubrication. It is safe to attempt to telescope any load within the limits of the load rating chart.

**INFORMATION**

- Deductions must be made from rated loads for stowed jib, optional attachments, hooks and load blocks (see deduction chart). Weights of slings and all other load handling devices shall be considered a part of the load.
- Crane load ratings with outriggers are based on outriggers and stabilizers extended and set with machine leveled.
- Main boom load ratings are based on a constant hoist cylinder pressure and do not exceed 85% of tipping. All load ratings above the heavy line are based on the machine structural competence and not on machine stability.

**DEFINITIONS**

- Operating radius is the horizontal distance from the axis of rotation to the center of the vertical hoist line or tackle with load applied.
- Loaded boom angle as shown in the column headed "Loaded Boom Angle: Degrees", is the included angle between the horizontal and longitudinal axes of the boom base after lifting rated load at rated radius.

